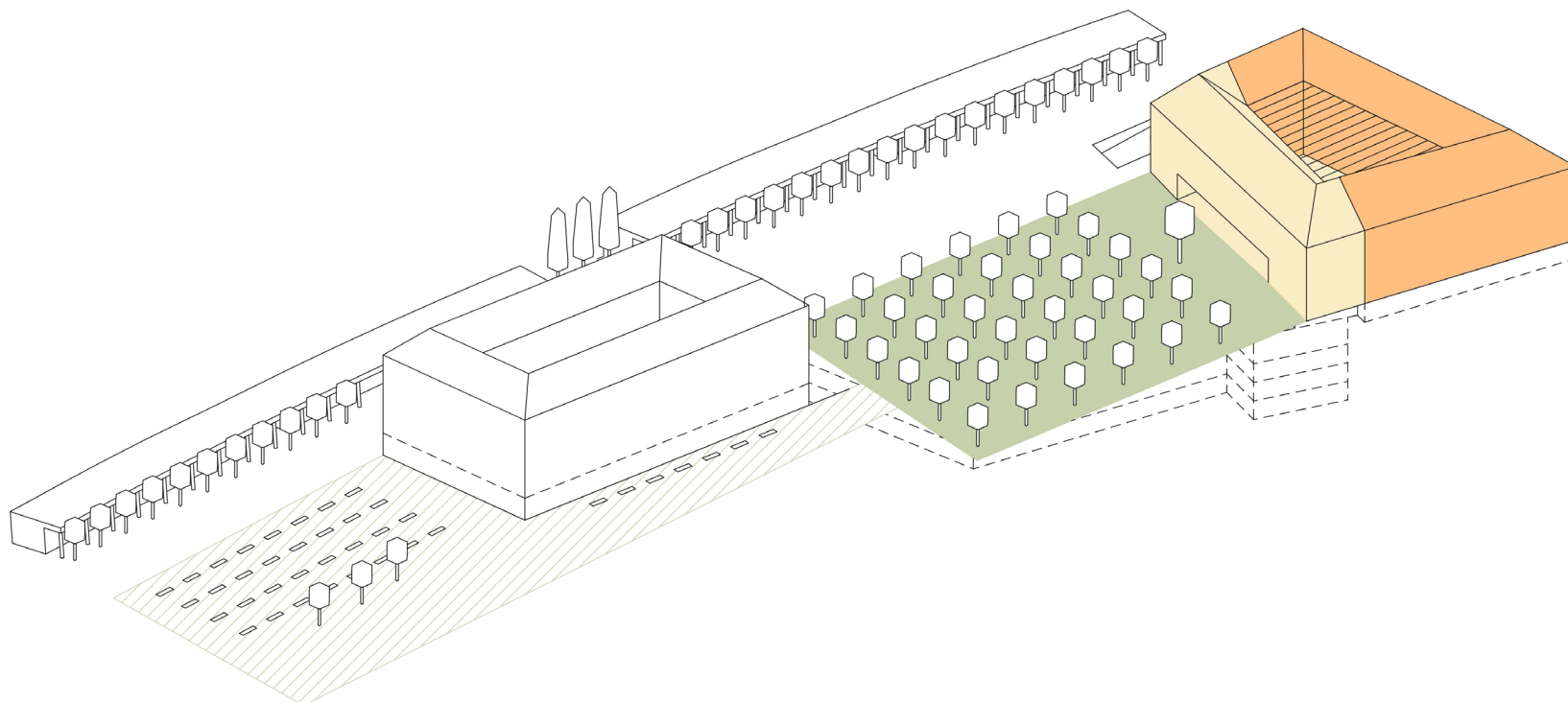


# PRENOVA LJUBLJANSKE TRŽNICE



Mestna občina  
Ljubljana



Ljubljana, november 2024

[www.ljubljana.si](http://www.ljubljana.si)

projektanti:

scapelab in ELEA 

# NAJ ŽIVI TRŽNICA



# NAJ ŽIVI TRŽNICA



# NAJ ŽIVI TRŽNICA

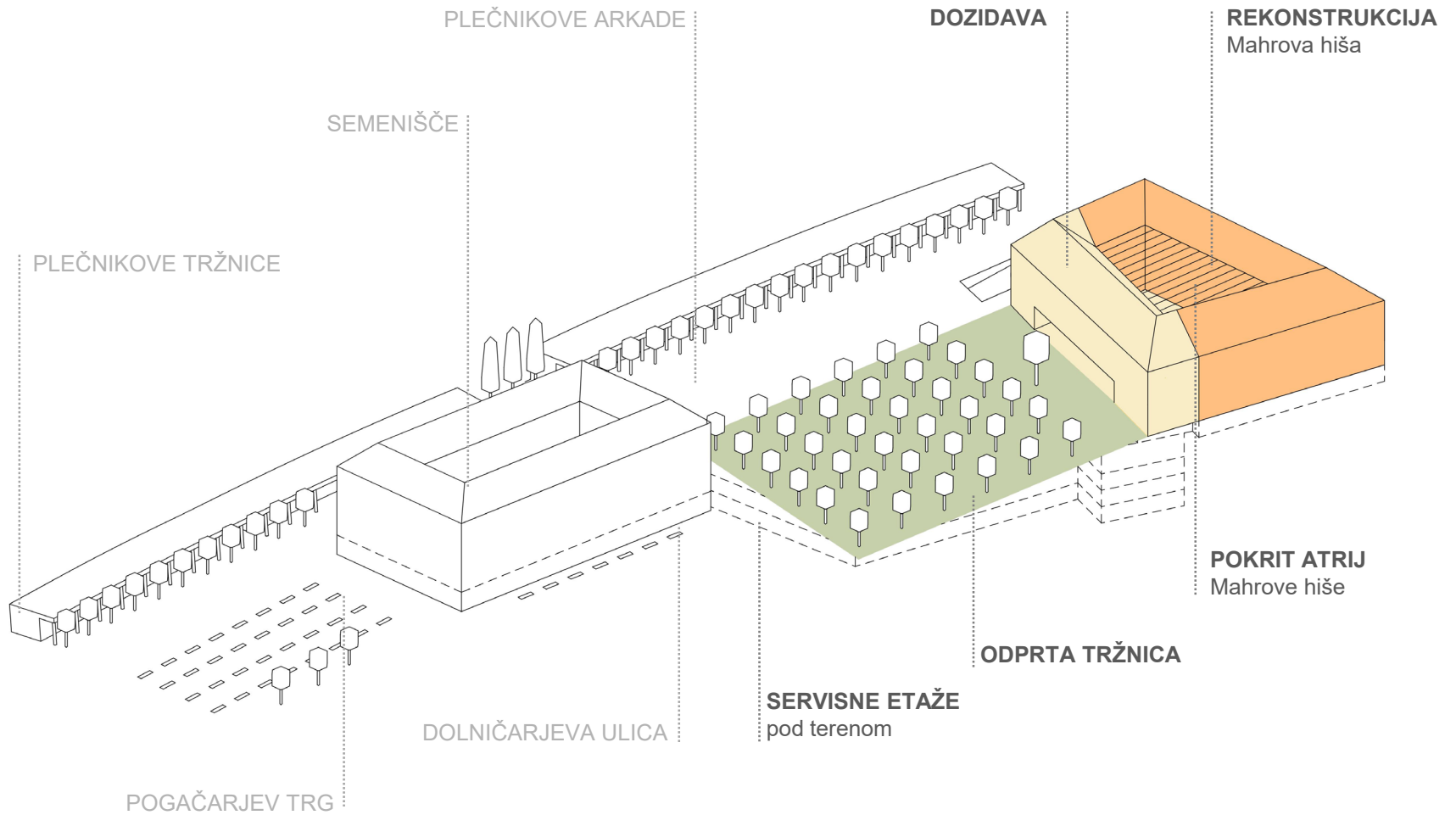


# NAJ ŽIVI TRŽNICA



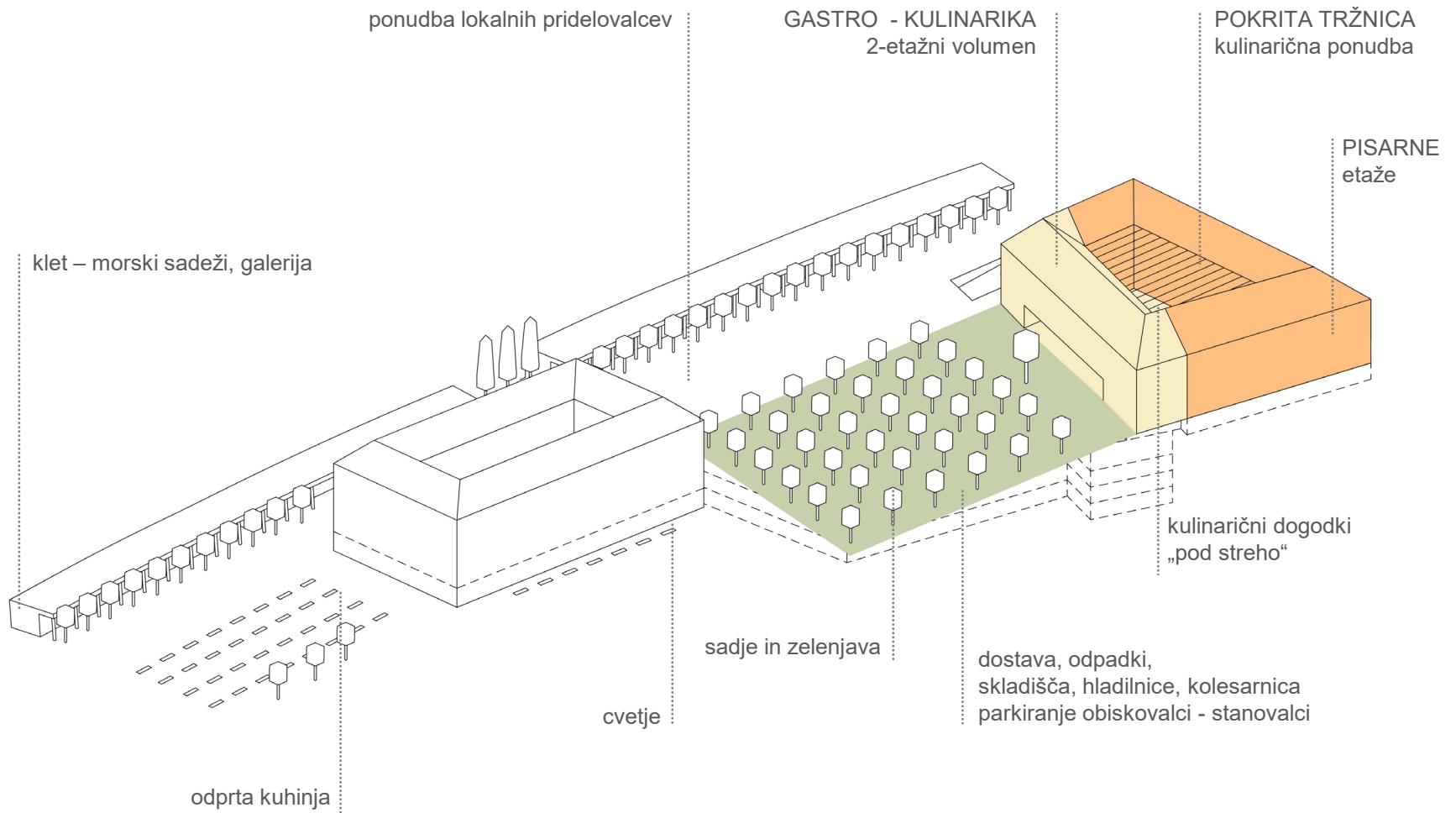
# NAJ ŽIVI TRŽNICA

## GRAJENO



# NAJ ŽIVI TRŽNICA

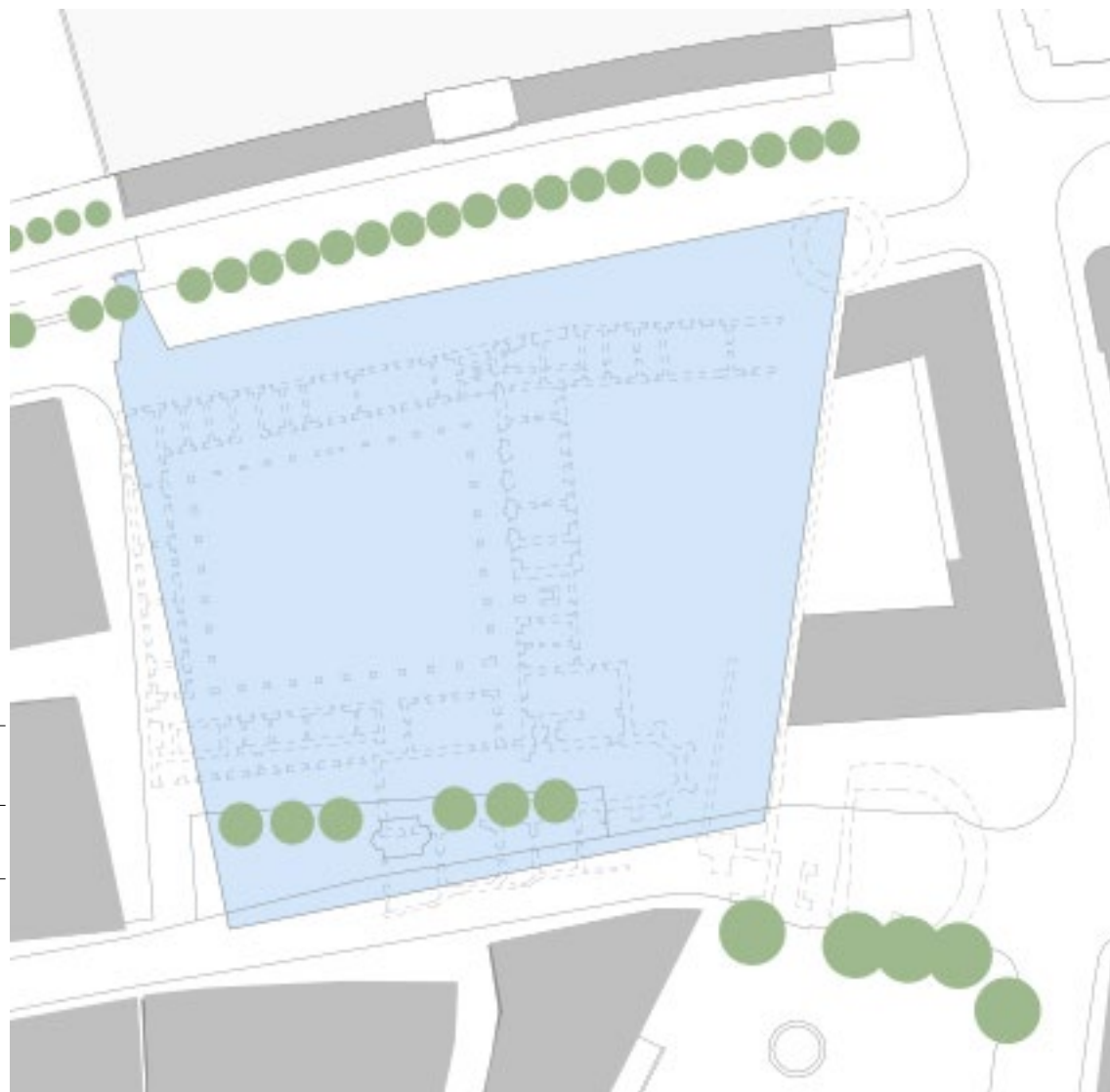
## VSEBINA



# TRŽNICA IN KONTEKST

## podzemni del tržnice

	<i>zazidana m2</i>	<i>etaže</i>	<i>PM</i>
<b>2009</b>	6.953 m2	3	616

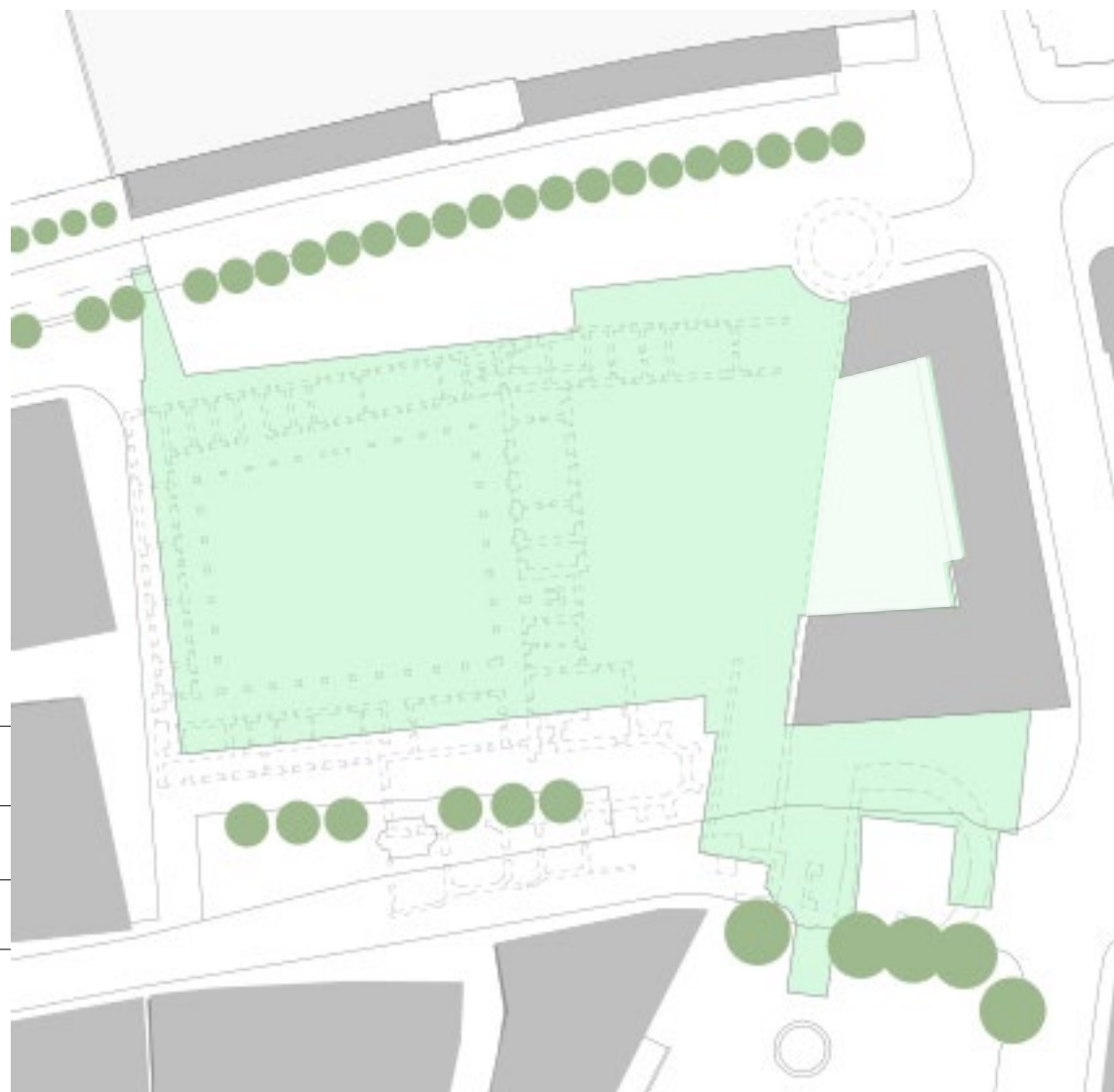




# TRŽNICA IN KONTEKST

## podzemni del tržnice

	<i>zazidana m2</i>	<i>etaže</i>	<i>PM</i>
<b>2009</b>	6.953 m2	3	616
<b>2015</b>	6.811 m2	4	515



# TRŽNICA IN KONTEKST

## podzemni del tržnice

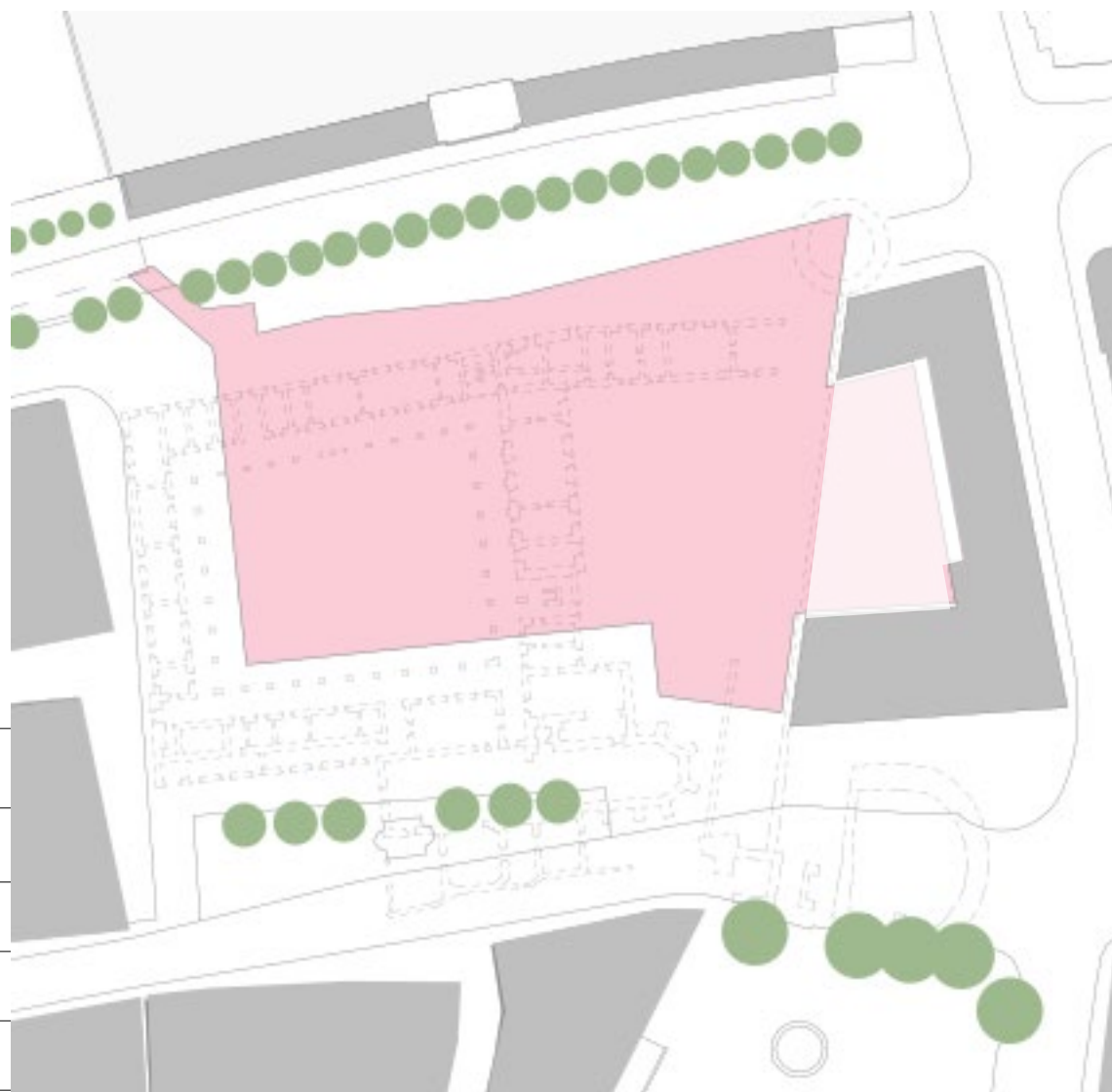
	<i>zazidana m2</i>	<i>etaže</i>	<i>PM</i>
<b>2009</b>	6.953 m2	3	616
<b>2015</b>	6.811 m2	4	515
<b>2017</b>	6.196 m2	4	420



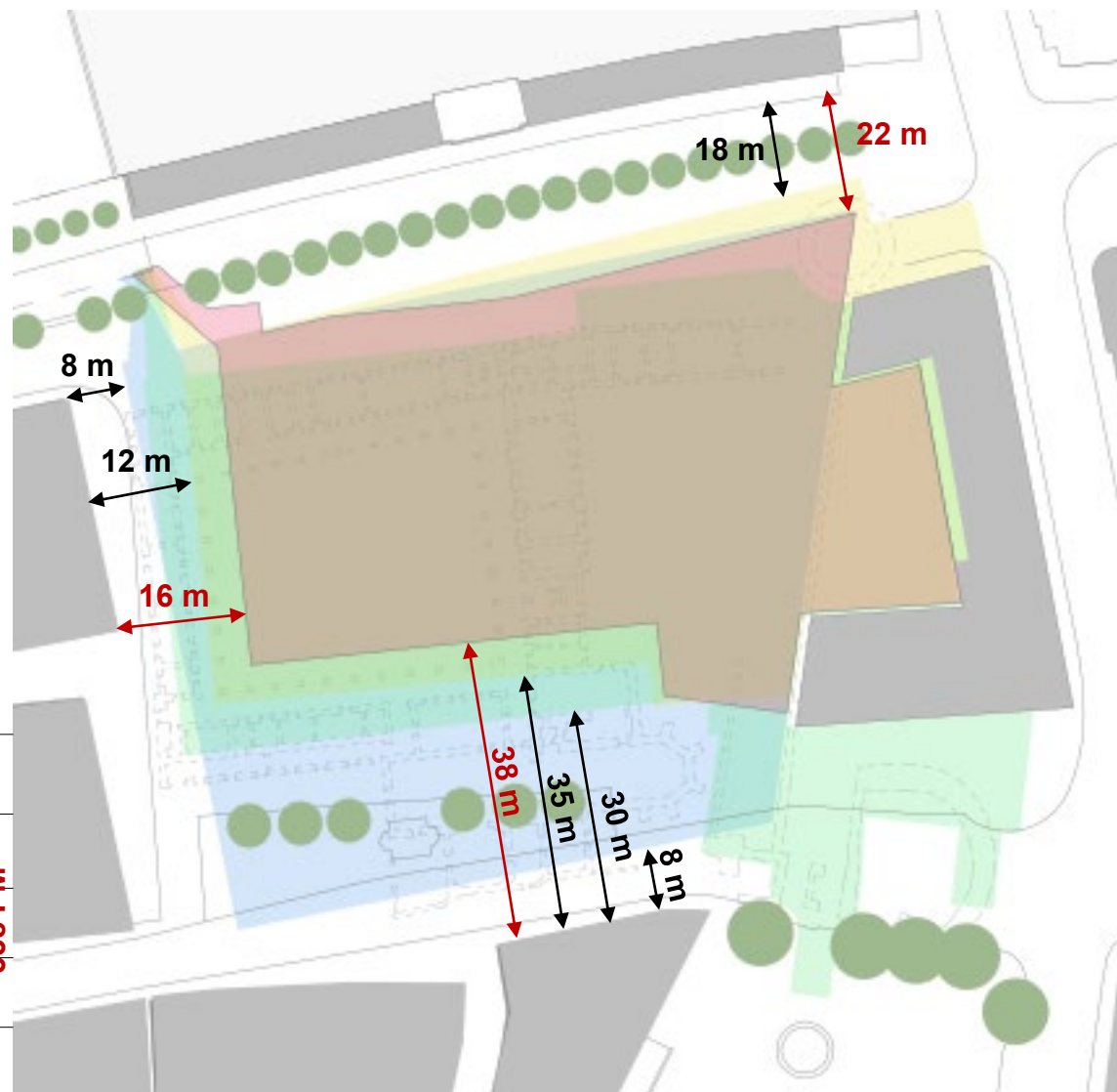
# TRŽNICA IN KONTEKST

## podzemni del tržnice

	<i>zazidana m2</i>	<i>etaže</i>	<i>PM</i>
<b>2009</b>	6.953 m2	3	616
<b>2015</b>	6.811 m2	4	515
<b>2017</b>	6.196 m2	4	420
<b>2023</b>	<b>4.856 m2</b>	<b>4</b>	<b>278</b>



# TRŽNICA IN KONTEKST

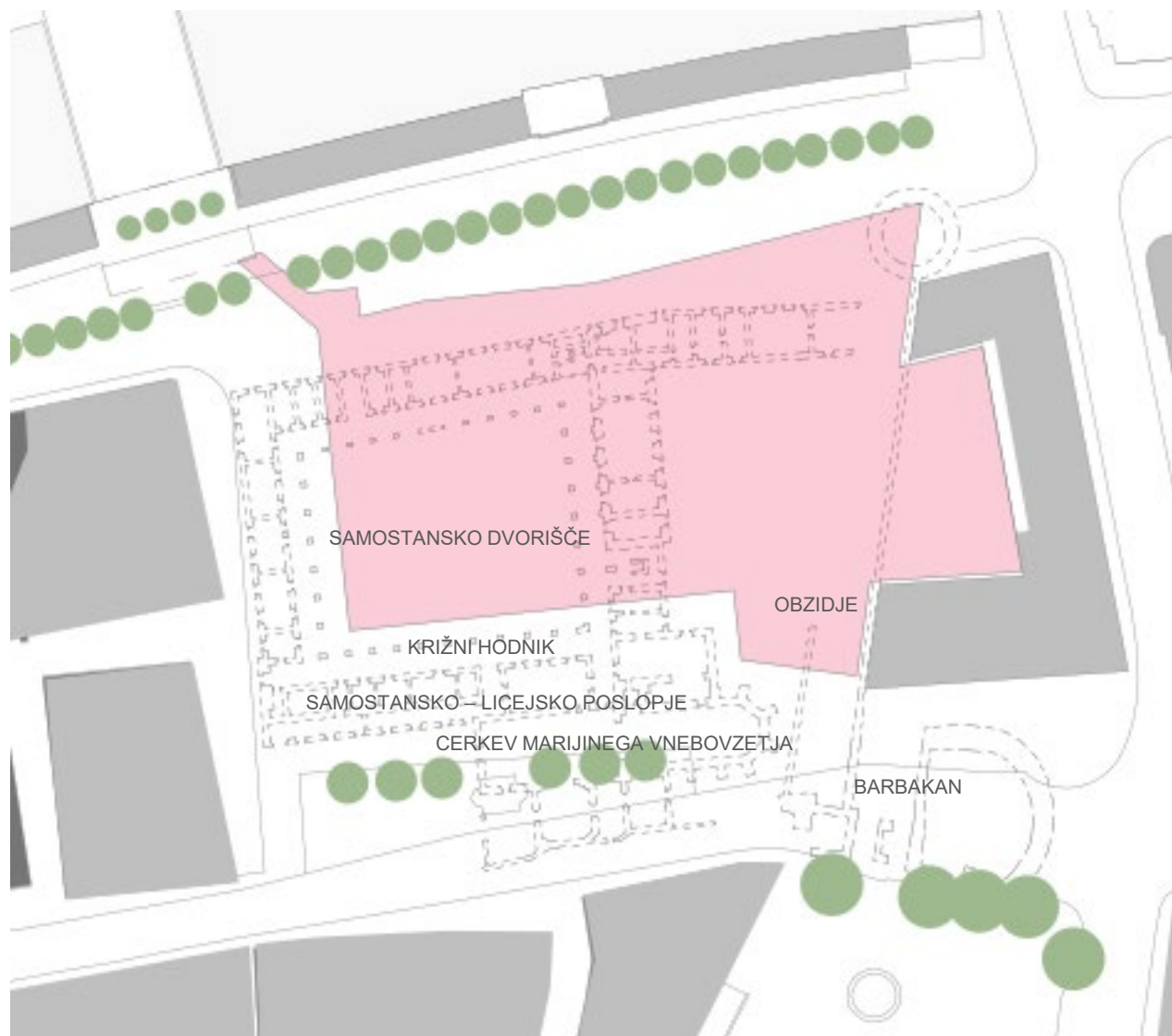


## podzemni del tržnice

	zazidana m <sup>2</sup>	etaže	PM
2009	6.953 m <sup>2</sup>	3	616
2015	6.811 m <sup>2</sup>	4	515
2017	6.196 m <sup>2</sup>	4	420
2023	4.856 m <sup>2</sup>	4	278

- 2.097 m<sup>2</sup>  
- 338 PM

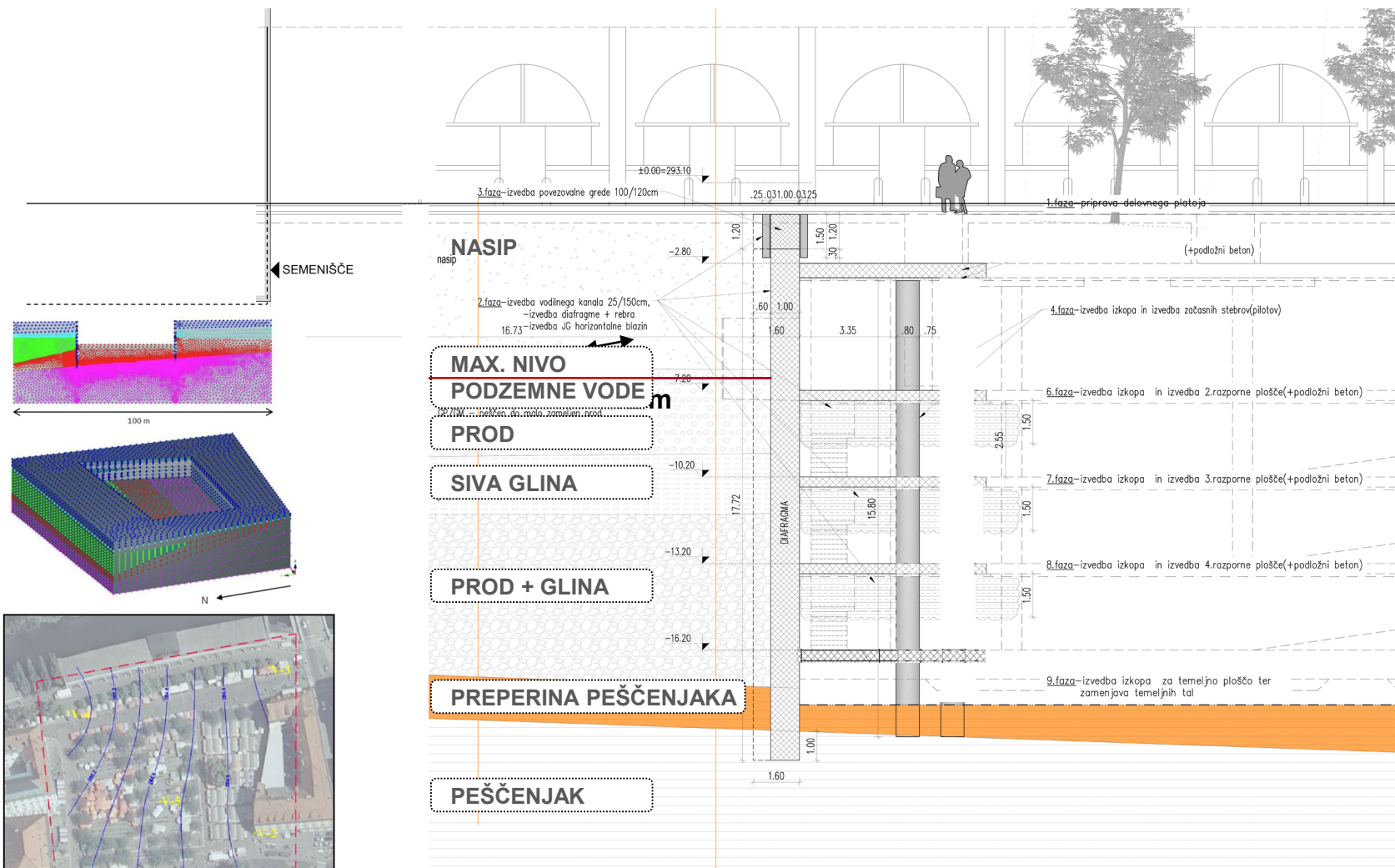
# TRŽNICA IN KONTEKST



ARHEOLOGIJA

# TRŽNICA IN KONTEKST

## PREREZNO



SEMIŠIŠČE

**NASIP**  
nasip

**MAX. NIVO  
PODZEMNE VODE** m

**PROD**

**SIVA GLINA**

**PROD + GLINA**

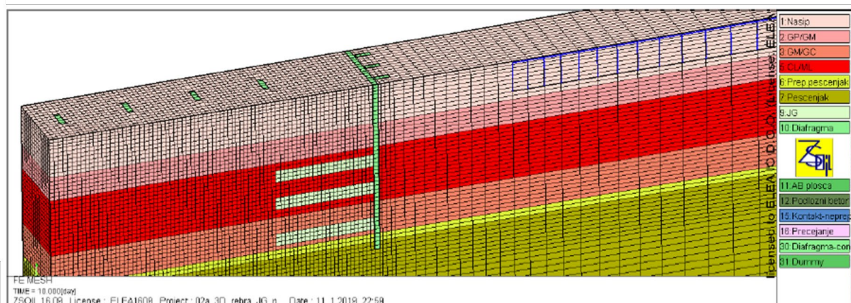
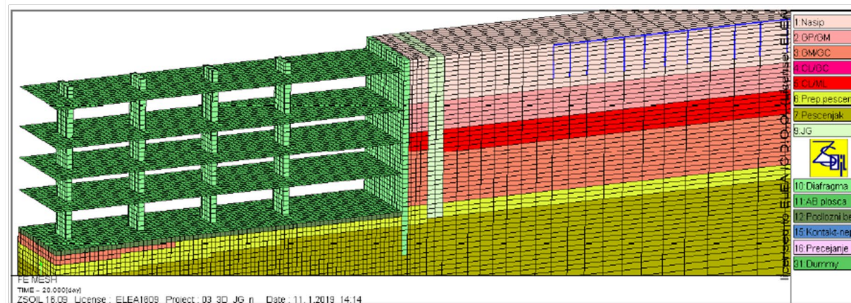
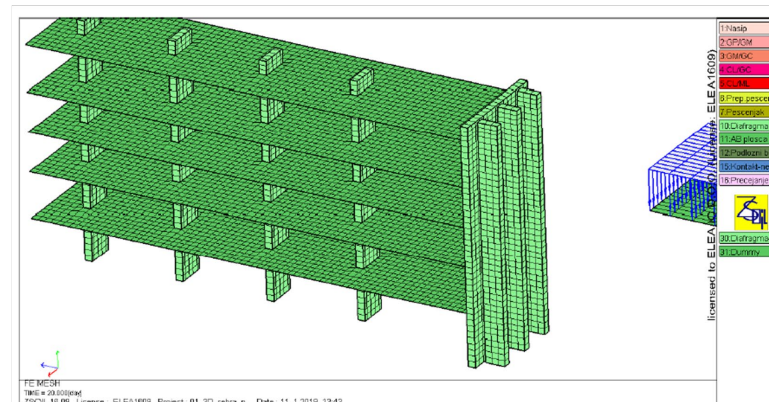
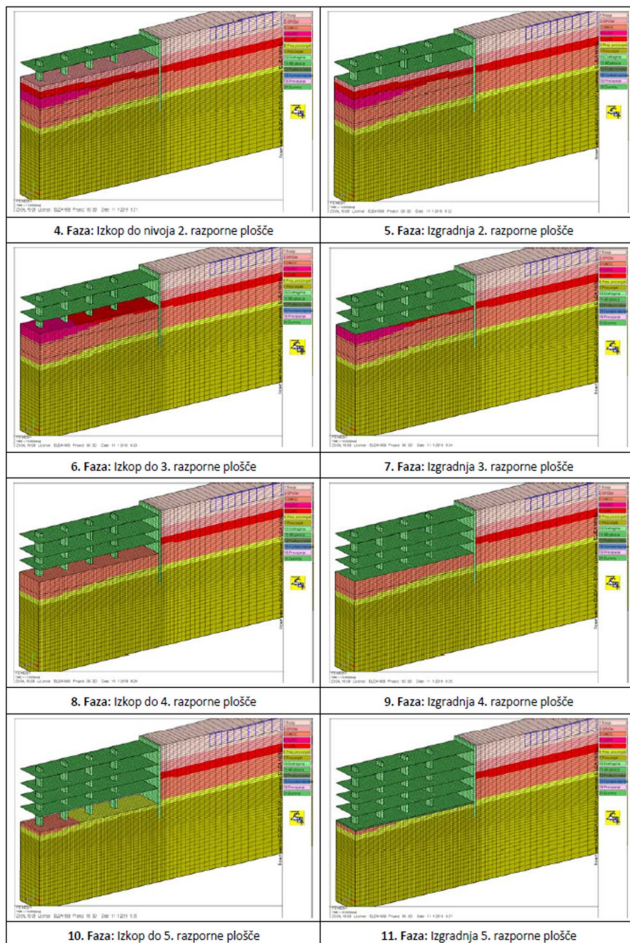
**PREPERINA PEŠČENJAKA**

**PEŠČENJAK**

gladina podzemne vode

# TRŽNICA IN KONTEKST

## PREREZNO



# OBMOČJE, PROSTO PROMETA

MOTORNI PROMET

trenutno

-

predvideno



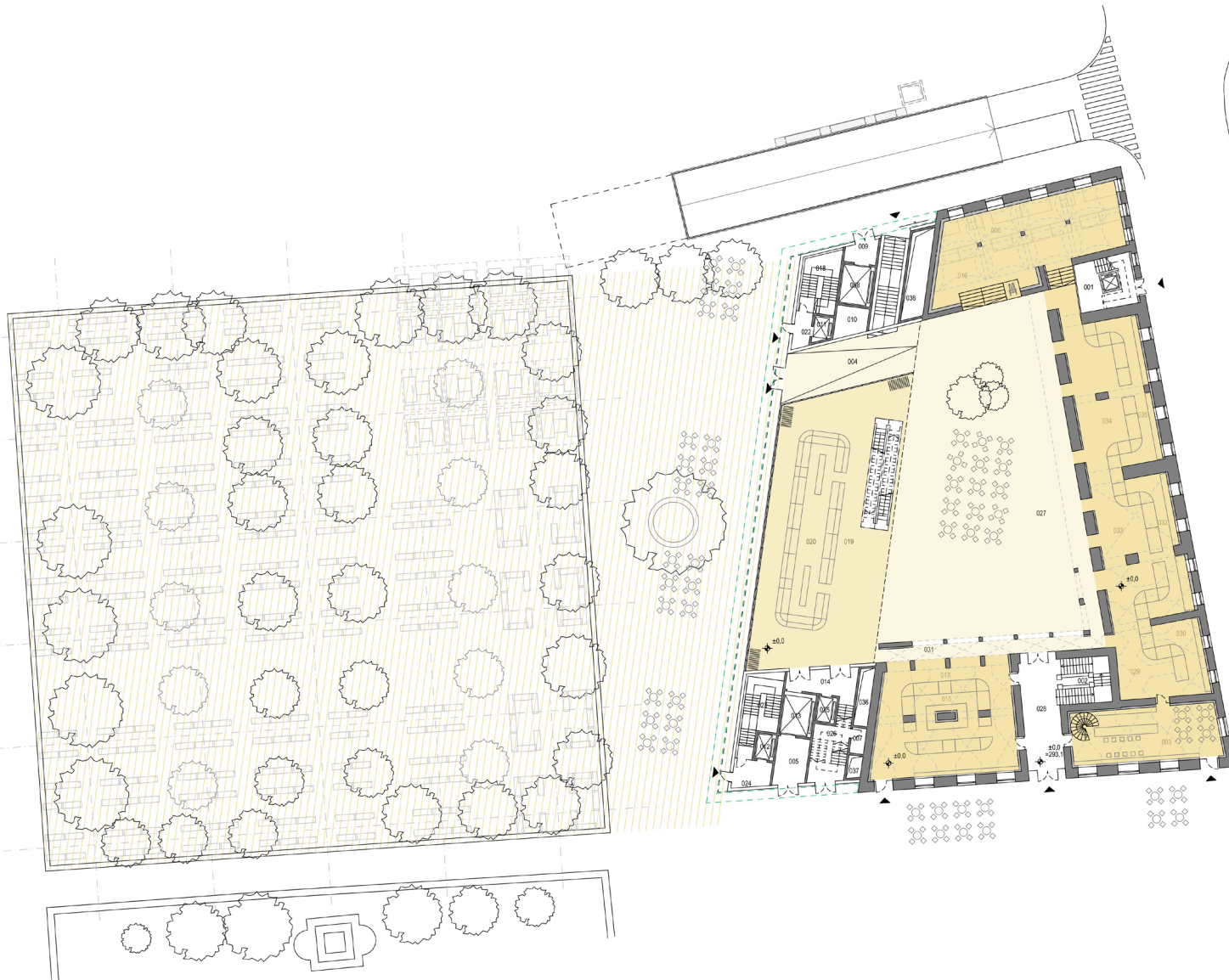






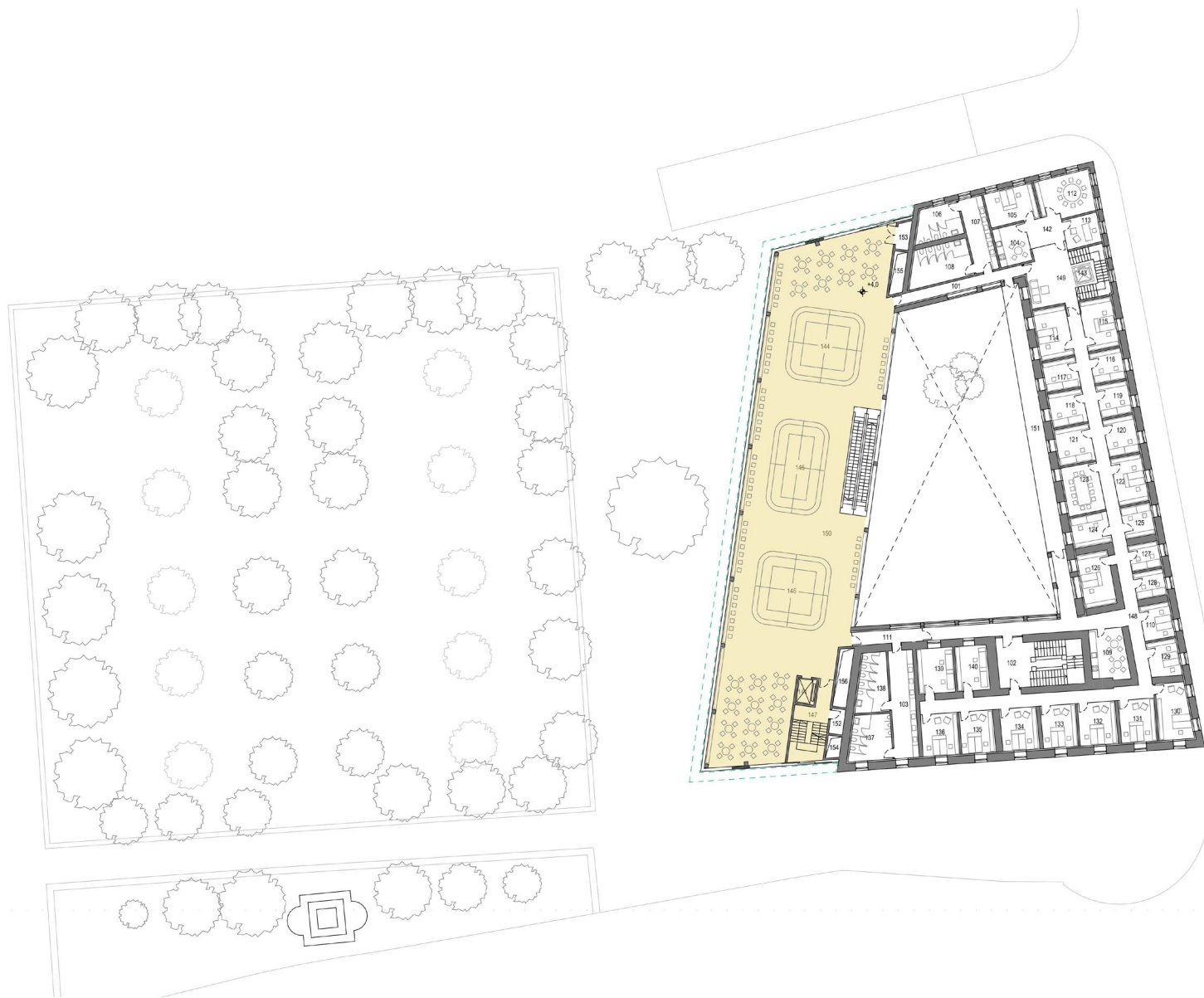
# PARTERNA UREDITEV PRITLIČJE

TLORIS



# 1. ETAŽA

TLORIS



# NAJ ŽIVI TRŽNICA



# NADOMESTNE LOKACIJE TRŽNICE

MED GRADNJO



NAJ ŽIVI  
TRŽNICA

